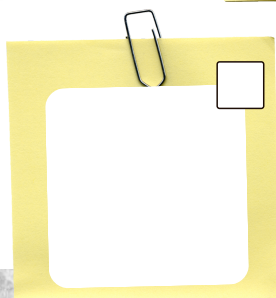
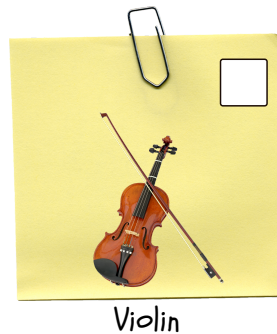
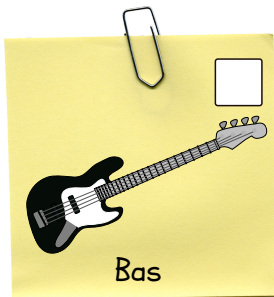
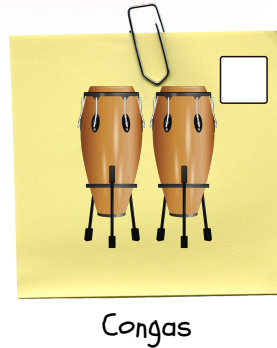
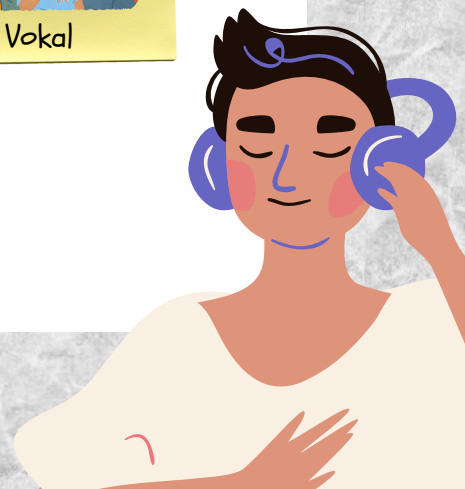
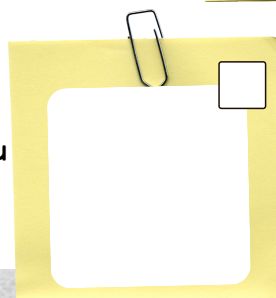


# LYTNING

*instrumenter*



Hører du  
andre?



# LYTNING

## form

Tegn musikens formled ned ud fra det du hører. Længden på legoklodsene siger noget om hvor mange takter lang formleddet er, farven fortæller hvad formleddet er, fx vers eller omkvæd

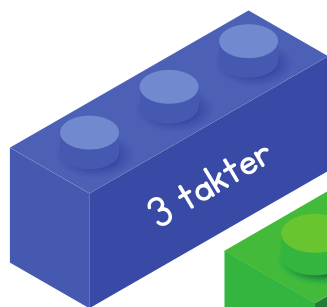
Start



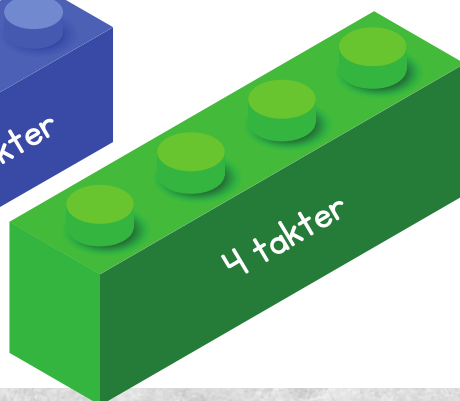
Slut



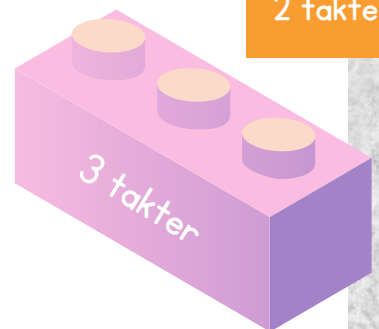
1 takt



3 takter



4 takter



3 takter



2 takter



3 takter

Farvekoder: Intro/outro   Vers   Mellemstil   Bro   Omkvæd   Kontraststykke

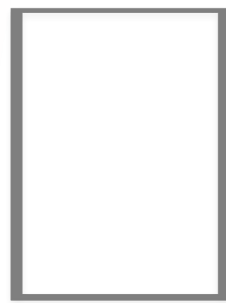
# LYTNING

## Indhold

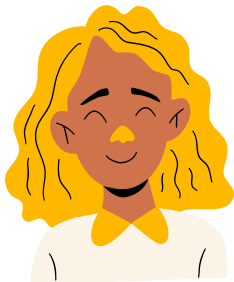


Forelsket

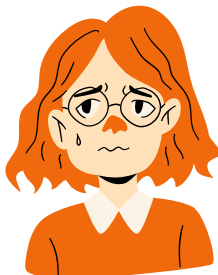
Hvilket humør har sangen?  
Hvad handler sangen om?



Noget andet?: \_\_\_\_\_



Glad



Ængstelig



Væmmelse



Trist



Overrasket



Flø



Vred



Misundelig

Musikkens handling

Skriv eller tegn